

Welcome to

TATANKA LODGE

We are thrilled to have you stay at Tatanka Lodge, and look forward to having you as our guest. This guide is intended to provide you with information to assist you in planning for your trip as well as provide driving directions, property access information and rental rules.

The insulated cup and stickers on the tray in the kitchen are provided as our gift to you to make your stay more comfortable and help you remember your time with us.

If you need anything whatsoever prior to or during your stay, please don't hesitate to call – we are here to help!

Safe Travels!

Shannon Martinez 512-565-2739

Eddie Martinez 512-633-0967

For more information on Tatanka Lodge, amenities and Kingsland attractions please visit our website. www.TatankaLodge.com

LOCATION

Tatanka Lodge is located at

431 Ellen Williams Loop, Kingsland, Texas 78639

Google Maps, Apple Maps & Waze will all route you to the property correctly

DOOR LOCKS

Front Door

You have been provided a unique door code to access the property. This code will open the front door.

To enter, type your code and the door should automatically unlock.

To lock the door from outside, pull the door closed tightly, press the lock button on the top of the keypad. The door should lock automatically.

To lock the door from the inside, simply turn the thumb turn to the right.

Upstairs Patio Sliding Glass Door

With the door open flip the thumb lever to the vertical (down) position

Slide the door closed firmly and it will be locked

RENTAL RULES

By staying at Tatanka Lodge, you agree to the following rules, terms and conditions:

- Check-out is by or before 10:30 a.m. on the booked departure day. Late check-out, when available, are an option for an additional fee. Please contact us for availability.
- Only the confirmed number of guests are allowed on the property. We do not allow more than 21 guests at any time without prior written approval from Tatanka Lodge.
- Please store bikes, skis, boating, fishing & swimming gear outside, in the boathouse or garage; no bikes, skis, boating, fishing & swimming gear inside the house.
- Please turn out lights that aren't in use. This applies especially to the game room and the exterior porch and dock lights. When left on overnight they are intrusive to the neighbors and their ability to enjoy the lake.
- Please do NOT flush sanitary products down the toilets or put food, including oil or grease, or coffee grounds down the garbage disposal. Additional fees may apply if there is damage to the system caused by flushing or putting these items down the drain.
- Please store wet clothing & towels in the showers, on the hooks in the bathrooms, in the laundry room, or on the drying rack or outside.
- Tatanka Lodge is not a "child-proof/baby-proof" property. Outlets do not have child-resistant covers, dish detergent and other cleaners are stored within reach of children, the property has stairs, there are toys and games with small parts that may present a hazard to small children, this is a lakefront

property that may present a drowning hazard and other hazards may exist. Adults must properly supervise children at all times.

- Please do NOT smoke inside the house or on the decks or patios. Additional cleaning fees may apply if someone smokes on the property.
- Parking at the property is limited to 8 vehicles. 3 garage spaces & 5 outside. In order to accommodate 5 outdoor spaces you will need to utilize the configuration in the image below.



- Pets are not allowed. Additional cleaning fees may apply if there is evidence of pets.

- Please do not move the ping pong, billiard, or air hockey tables
- Please do not move furniture.
- To use the propane grill you will need to turn the gas at the tank shut off. When you are done turn off the gas back off at the propane tank.
- If you intend to use the boat lift and are not familiar with them please contact us for a tutorial. All ballasts and tanks must be emptied from any watercraft before being lifted by the boat lift.
- **Trash pick up happens on Wednesday around 6am.** If you stay with us on a Tuesday or Wednesday please be sure to take the dumpsters to the curb in time to be picked up.
- Guests agree to review instruction manuals for all appliances, coffee makers, heat/AC units, pack n' play, etc. to understand the manufacturer's instructions and operating precautions. These items have been provided for guest comfort and convenience. Use these items at your own risk. Manuals are available on the website www.tatankalodgekingsland.com

CHECK OUT INSTRUCTIONS

Thank you for staying with us! We hope you've enjoyed your stay. Prior to departure, we ask for your assistance with the following:

- Please depart by 10:30 a.m. so we can prepare the house for our next guest.
- Place all used towels in showers or bath tubs; do not place wet towels on floors as this can damage the finish on the flooring.
- Load and run the dishwasher.
- Please wash all dishes – failure to wash dishes will result in additional fees.
- Remove and dispose of all food items from the refrigerator.

- If you have used the grill or other outdoor cooking devices please be sure to scrape the grill and clean up any grease or drippings.
- Take out all trash to the dumpsters located on the west side of the house near the chain link fence.
- Dumpsters need to be taken to the street upon check out. Trash day is Wednesday and they arrive usually by 6am. Failure to take trash to the dumpsters and the dumpsters to the street will result in additional fees.
- Please leave soiled hot pads, dish towels and oven mitts on the kitchen counter tops so our cleaning crew can get them cleaned; do not leave them in drawers.
- Turn off lights, televisions, fans and other electronics.
- Lock and close all doors and windows.

Please let us know if there is anything in the home that needs servicing or attention.

Share your photos by tagging us on instagram @tatankalodgekingsland and don't forget to provide a review of your stay!

WHAT NOT TO PACK

A few things that you do NOT need to pack for your stay - we've provided all of these items for your comfort & convenience:

TOILETRIES

Shampoo
Conditioner
Shower Gel/Body Wash
Hand Soap

PAPER PRODUCTS

Paper Towels
Toilet Paper
Kleenex
Paper Napkins

BATHROOM

Blow Dryers
Toothpaste
Q-Tips
Cotton Rounds

COFFEE/BEVERAGES

Ground Coffee
Coffee Filters
Variety of Hot Teas
Sugar
Alternative Sweeteners
Non-dairy creamer

FOOD/PANTRY

Microwave Popcorn
Non Stick Spray
Salt
Pepper
Variety of spices
Sugar

ELECTRONICS

USB adapters
Chargers for iPhone (limited supply) in the Concierge
Drawer

LAUNDRY

Laundry Detergent
Fabric Softener Sheets

BEDS

Air Mattress (1)
Roll Away Beds (2)
Pack-n-play (1)

KITCHEN EQUIPMENT

Variety of Pots & Pans
Large Stock Pots
Muffin Tins
Cookie Sheets
Crock Pot
Electric Tea Kettle
Toaster
Coffee Maker
Blender

OTHER KITCHEN

Dishwasher detergent
Trashbags
Foil
Sponges

TABLEWARE

Dinner Plates
Salad Plates
Bowls
Mugs
Glasses
Flatware
Wine Glasses
Serving Platters & Bowls

WATER FRONT

Kayak
Paddleboards (3)
Assorted sized life jackets
Lily pad

GAMES & ACTIVITIES

Poker chips
Dice
Decks of Cards
Loteria
Bingo
Board Games
Coloring Books
Crayons
Art Paper
Books
Foosball
Pool Table
Corn Hole
Ping Pong
Air Hockey
Netflix Streaming
Hulu Streaming
Wi-Fi

CONCIERGE DRAWER

Razors
Deodorant
Toothbrushes
Dental Floss

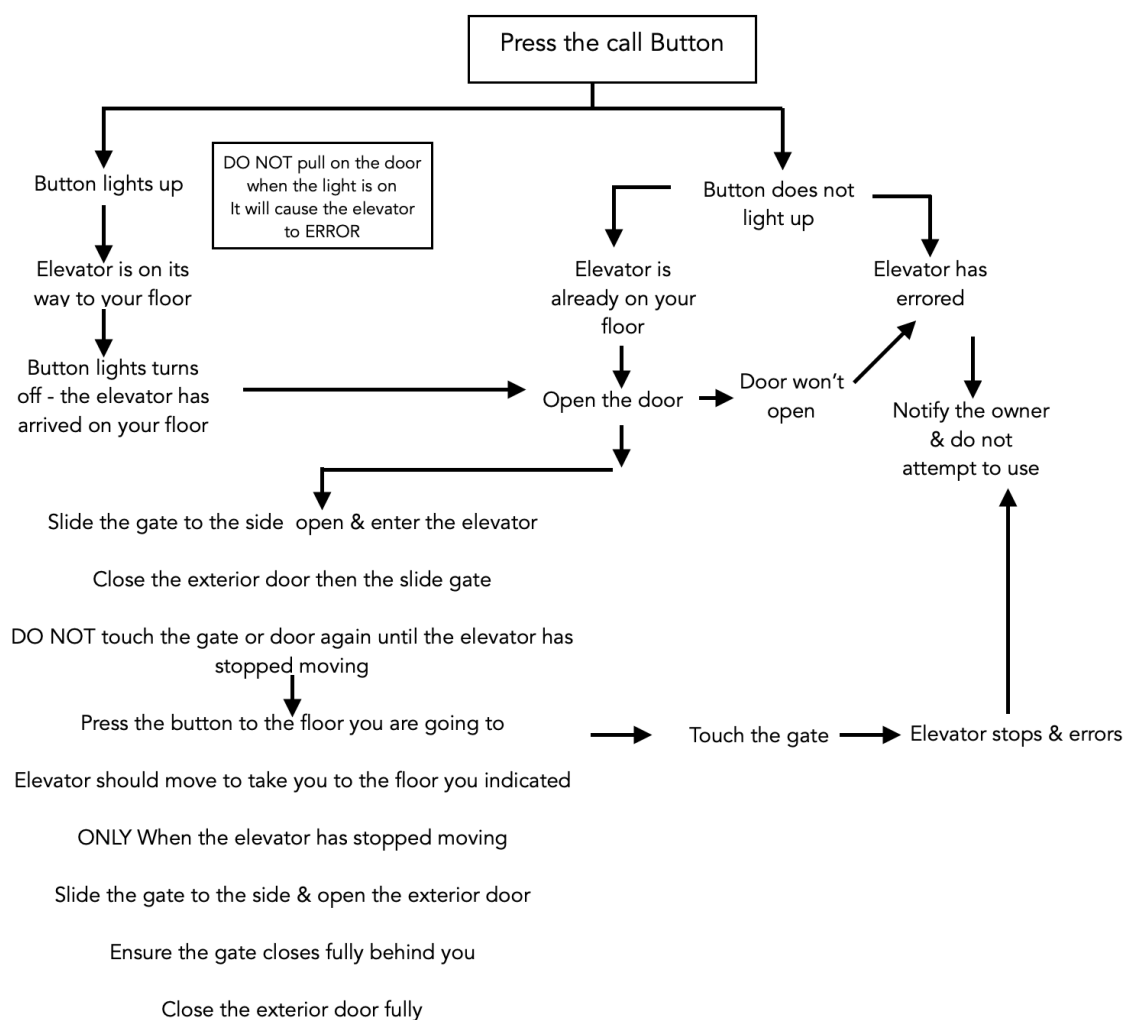
We make every effort to keep all of these items on hand for your use, please note that supplies of certain items may be exhausted without our knowledge. Take what you need & leave the rest for future guests

ELEVATOR OPERATION

Tatanka Lodge is equipped with a Residential Elevator. It is a convenience that, if needed, you are welcome to use. Children should not use the elevator unsupervised and anyone choosing to use it should read all of the instructions here and posted in and around the elevator to ensure proper operation. If not used properly the elevator will error and require a re-set. We cannot guarantee that a technician will be able to re-set the unit during your stay should it error.

Do not bypass any security features or attempt to reset it yourself. If you are a wheelchair user there is also an accessible ramp on the East wall of the house.

To Call the Elevator to you:



TECHNOLOGY TIPS

Wifi

You can access the wifi network using the credentials below or by scanning this QR code

Network:
Tatanka Lodge Eero Guest

Password:
ChiefStarTeaspoon716



Apple TV / Chromecast / BluRay

Each of the TVs is set up with an Apple TV streaming device. The living room is also set up with a Chromecast, BluRay Player & antenna

Once you have turned on the television please also power on the device you are wanting to connect with using its separate remote.

Change the input on the TV until you connect with the device you are trying to use.

Once you are connected to the device you want to use Hulu, Netflix and other streaming channels have already been activated and you should be able to navigate to those "channels" and watch what suits you.

Heating & Air Conditioning

The upstairs and downstairs are controlled by separated heating & air conditioning units. They are operated independently from one another

Upstairs

This unit is controlled from 2 locations. First is a smart screen panel between the bathroom and the kitchen in the dining area upstairs. Second is a thermostat in each of the rooms.

The upstairs can only heat OR cool at any given time. If you have the heat on in the Sunrise Suite you cannot have the AC on in the Mesquite room. This setting is controlled from the smart screen in the dining area. From there you can also control the temperatures in each of the individual rooms or they can be controlled from the thermostat in the actual rooms.

Downstairs

These 3 units operate independently but are required to remain on a common setting. The units can only heat OR cool at any given time. If you have the heat on in the Longhorn Cavern Bunk Room you cannot have the AC on in the Lake View room. This setting is controlled by each of the three separate remotes that are mounted to the wall immediately below each of the blowers

We have the ability to control these units remotely.

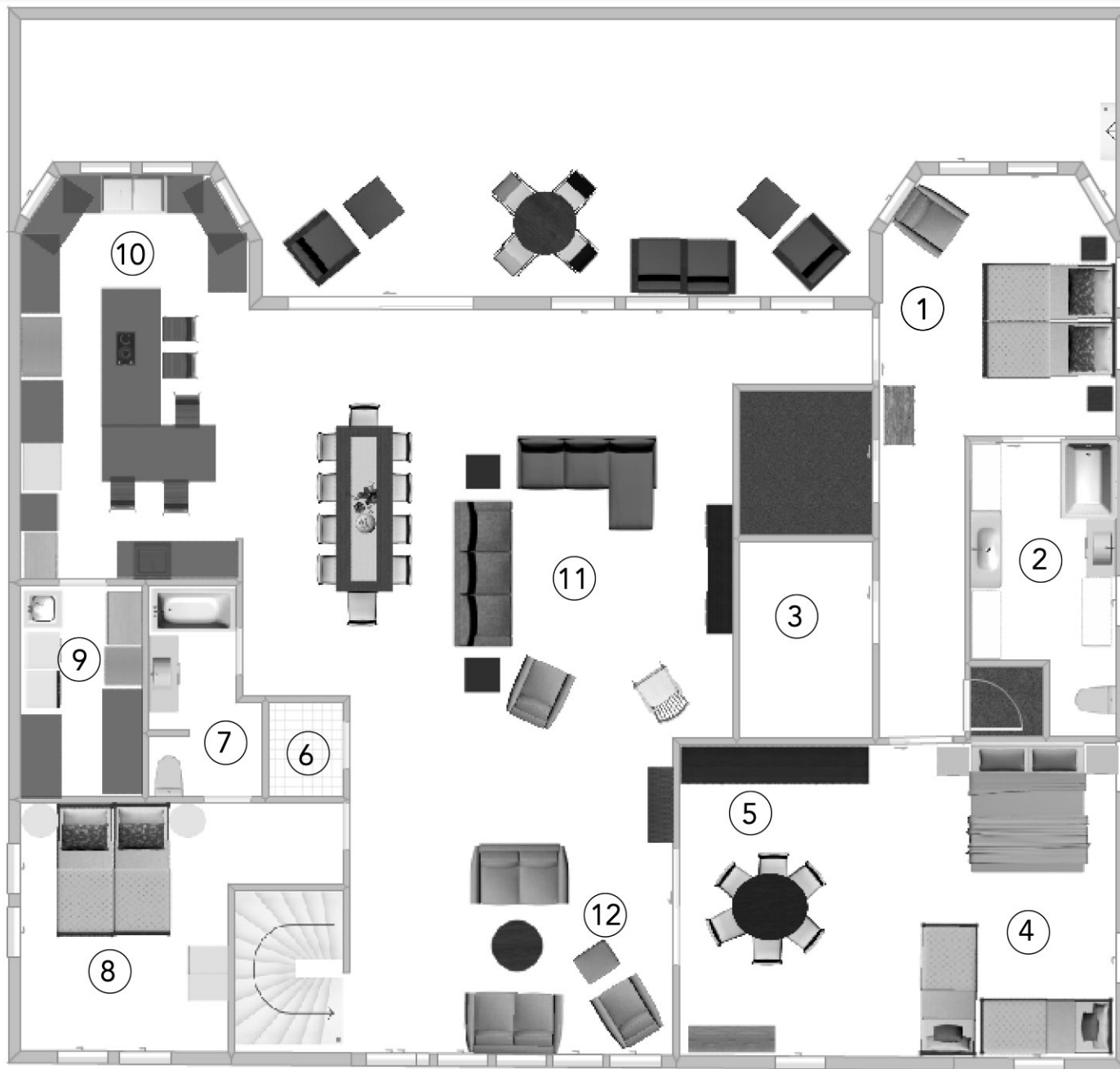
If you are struggling to set things comfortably please reach out and we can assist you remotely.

GOOD TO KNOW

Tatanka Lodge is located on a natural body of water where zebra mussels are present. While not necessary to enjoy the swim area near the dock some guests choose to bring and wear water shoes.

Tatanka Lodge is dedicated to doing our part to protect the environment through sustainable practices. We have eliminated single use plastic toiletries, dish soap, hand soap bottles - by using bulk toiletries and refillable dispensers Tatanka Lodge will prevent thousands of single - use plastic toiletry containers from being disposed of in landfills each year. We have provided a quality paraben, phosphate, gluten & sulfate free line of products that are cruelty free PETA-certified, 100% vegan and never tested on animals so you can feel good while using it

Lake LBJ

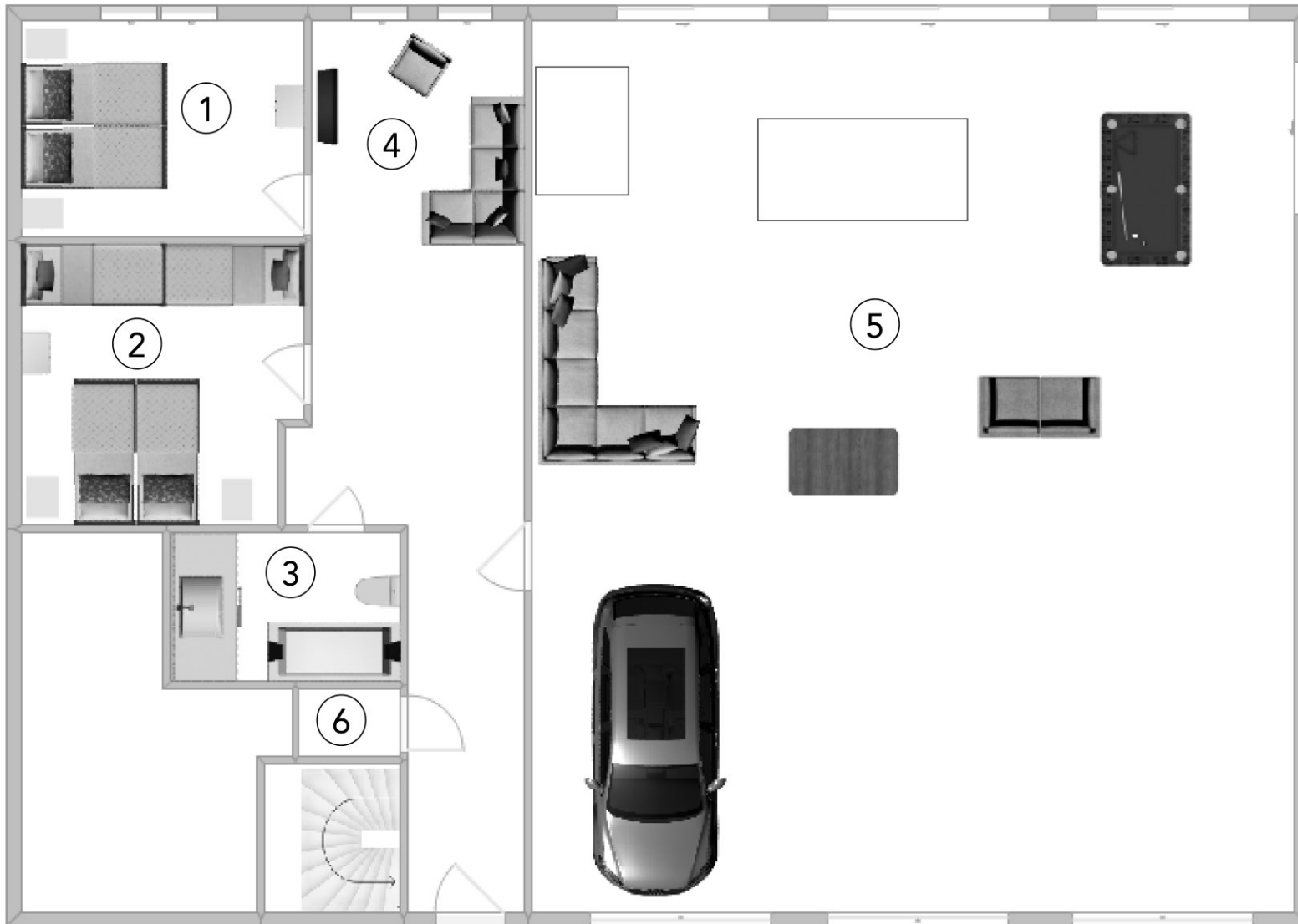


- ① Sunrise Suite
1 King Bed
- ② Sunrise Suite Bathroom
- ③ Closet
2 roll-away Twin Beds
- ④ Mesquite Room
1 Queen Bed
5 Twin Beds (bunk)
- ⑤ Games Area & Table
- ⑥ Elevator
- ⑦ Upstairs Bathroom
- ⑧ Pecan Suite
1 King Bed
- ⑨ Laundry/Utility
- ⑩ Kitchen
- ⑪ Living Room
- ⑫ Sitting Room

Ellen Williams Loop



Lake LBJ



- 1 Lake View Room
1 King Bed
- 2 Longhorn Cavern
Bunk Room
1 King Bed
4 Twin Beds (bunk)
- 3 Downstairs Bathroom
- 4 Downstairs Living
Room
- 5 Porch/Games Room
Ping Pong
Air Hockey
Billiards

Ellen Williams Loop

